



CentraleSupélec



CentraleSupélec

Formerly Ecole Centrale Paris & Supélec

Accelerated degree in Engineering
– *A post-graduate 2-year elite programme* –



CentraleSupélec



CENTRALESUPELEC IN BRIEF

- **CentraleSupélec (2015) is the merger of Ecole Centrale Paris (1829) and Supélec (1894), two leading engineering graduate 'Grandes Ecoles' in France.**



- **CentraleSupélec recruits amongst the top 2% of French science students after 2 years of Classes Préparatoires**
- **20% of CentraleSupélec students are coming from the best international universities all over the world**
- **CentraleSupélec is one of France's top 2 ranked Engineering 'Grande Ecole'**
- **CentraleSupélec is a Founding member of**



CENTRALESUPELEC: GLOBAL KEY FIGURES



STUDENTS

4700 Students
3500 Engineers
30% International



PEOPLE

470 academic staff & researchers
480 Administrative & tech staff

INTERNATIONAL



180 Partners
45 Countries
80 DD agreements
T.I.M.E.
Erasmus Mundus



CentraleSupélec

COMPANIES



140 Corporate partners
Executive Educ.
300 Training Programs



RESEARCH

18 Research Dept
1000 people
12 chairs

NETWORK

31 500 active alumni
5 continents
Strong and active regional groups



- **National Ranking**

Ranked n°2 in training multi-disciplinary engineers in France
Ranked n°1 for International development and Company relations



- **International Rankings**



164th in the top 200 World University Ranking

79th in the top 100 in **Engineering and Technology**

4th in France

1st in France in Electrical & Electronic Engineering

1st in France in Mechanical, Aeronautical & Manufacturing Eng.

1st in France in Civil and structural Engineering



Ranked in the **Top 200-250** World University Ranking

80th in the top 100 in **Engineering and Technology**

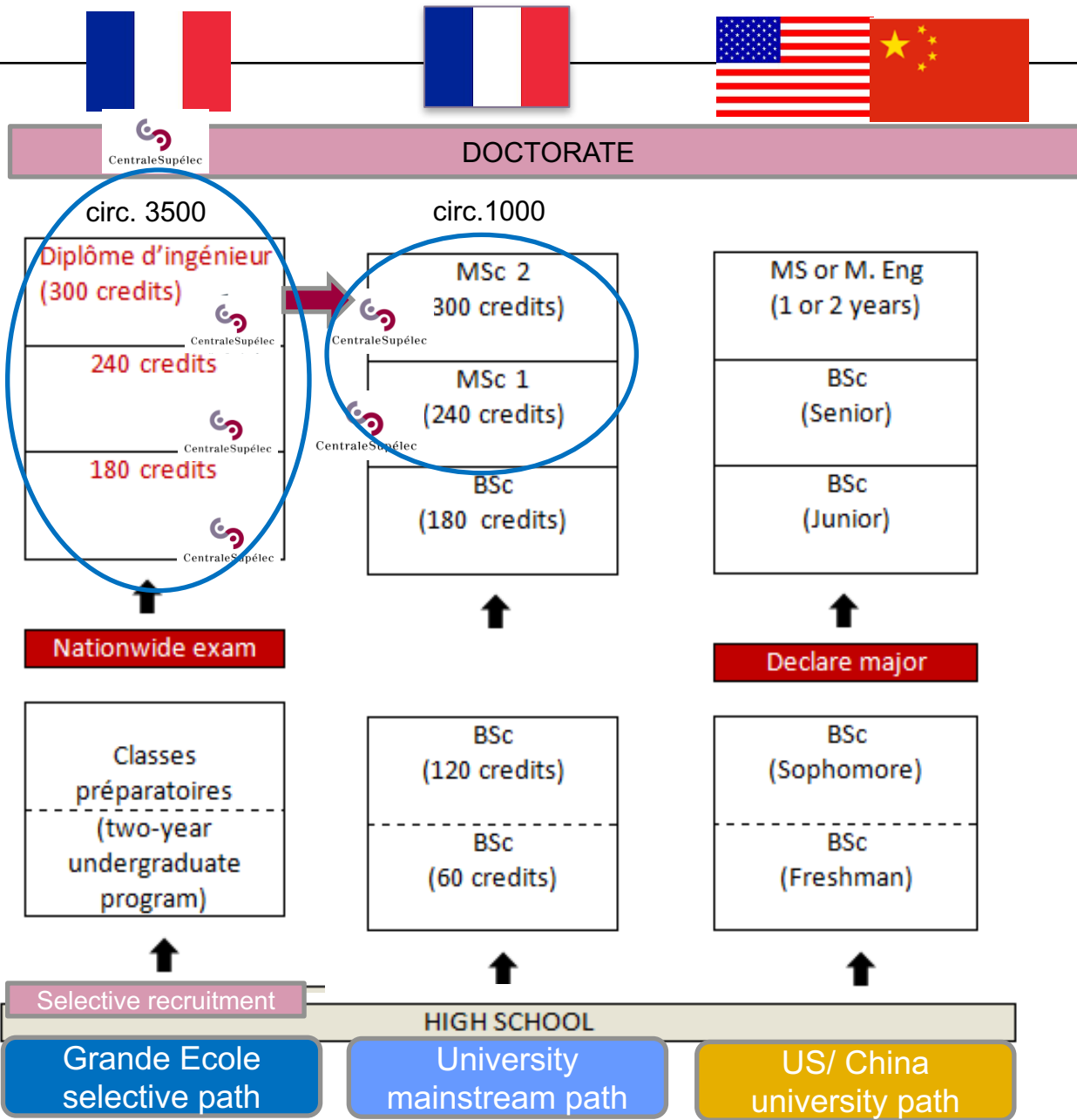
5th in France

- **Employability and Employer reputation**

7th in the QS Worldwide employer reputation survey

42th in THE Global Employability University Ranking

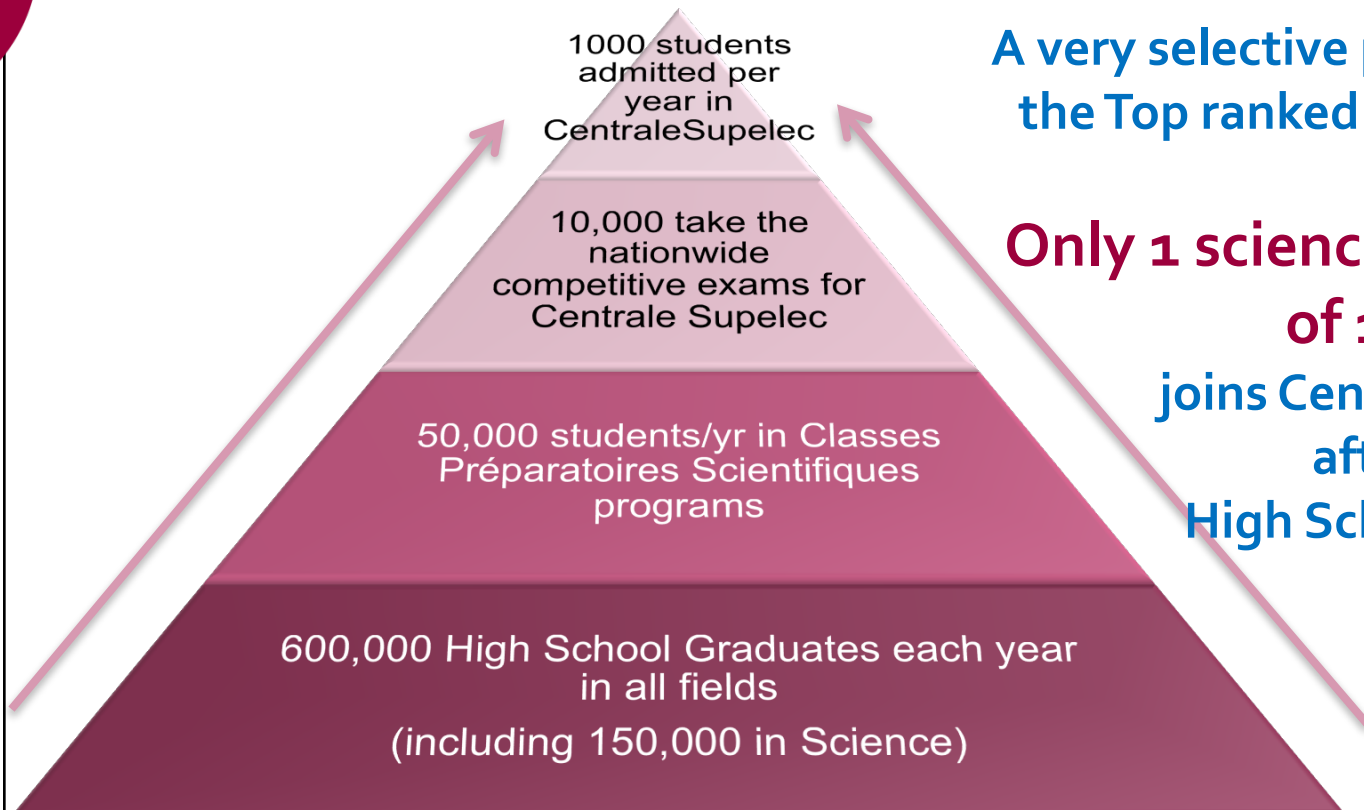
FRENCH HIGHER EDUCATION SYSTEM VS CHINA



CENTRALESUPELEC : A SELECTIVE PATH TO ENGINEERING

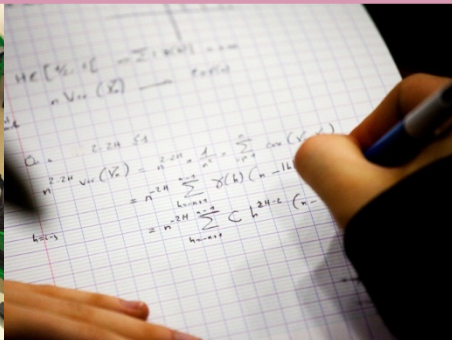


CentraleSupélec



A very selective process to get to the Top ranked 'Grande Ecole':

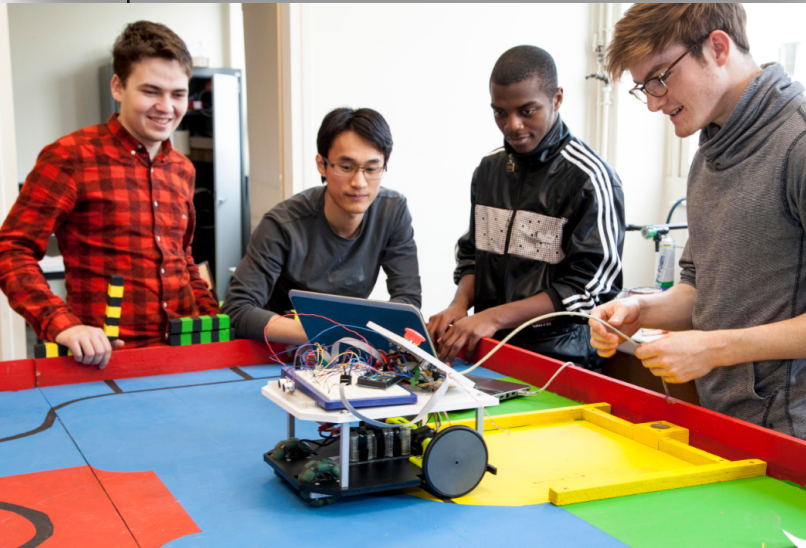
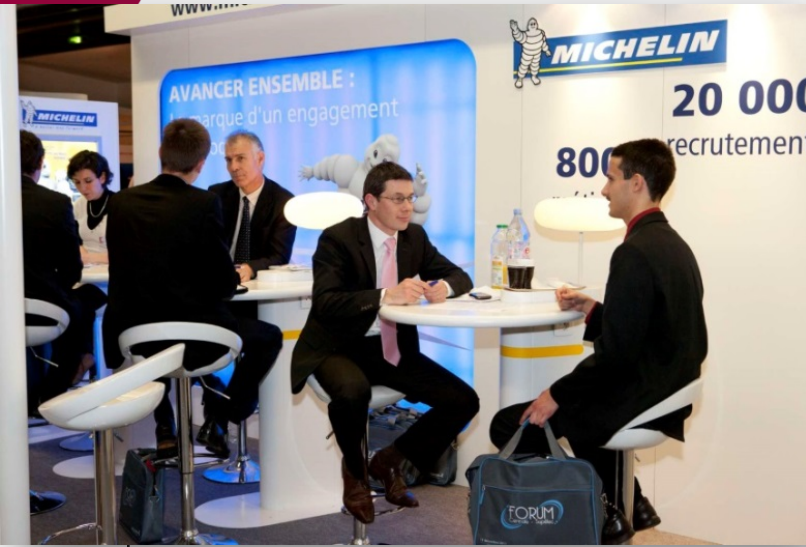
Only 1 science student out of 150 joins CentraleSupélec after High School graduation !



SOME FACTS ON CENTRALESUPELEC ENGINEER STUDENTS



CentraleSupélec



- The standard **engineering curriculum last for 3 years** after admission at CentraleSupélec
- **3500 engineer students** on our **3 French campuses** (Paris Saclay, Rennes, Metz)
- **32% of international** students, with **Chinese being the 2nd foreign nationality** around 150 chinese students on campus
- **40% of our students graduate with a double master degree** from one of our 180 partner universities (MIT, Stanford, Imperial College, NUS, HKUST, Tsinghua, TU Munchen, EPFL...)
- **100% of our students** get many **job offers** before their graduation
- Our alumni are reputable and sought for professionals in **all domains of the industry, in politics, in entrepreneurship**. Many of them reach **top management positions** in multinational companies.



CENTRALESUPELEC : SOME FAMOUS ALUMNI



More than 31,000 engineers worldwide

- **Technology pioneers and visionaries**

- Gustave Eiffel (1855), Creator of the Eiffel tower, engineer, businessman and innovator
- Louis Bleriot (1895), the 1st man who flew across the Channel, plane inventor and aviator
- René Panhard, 1st french automobile industry founder
- Schlumberger (1907), founder of the Schlumberger group , oil industry
- Francis Bouygues (1947), BTP

- **CEOs and company founders**

- Sydney Toledano (1976), current CEO of Dior
- Benoît Potier (1979) current CEO of Air Liquide
- Gérard Pelisson (1955), co-founder of Accor Group (Sofitel, Novotel, IBIS hotel chains)
- Alain Benichou (1983), CEO of IBM France since 2010
- Jean-luc Lagardère (1951), founder of EADS and Lagardère Group

- **Politics & the Arts**

- Boris Vian (1942B), writer
- Jean Fourastié (Centrale Paris, 1930), economist
- Thierry Breton (1979) , a former Minister of Economy, Finance & Industry (2005-2007) and CEO FranceTelecom

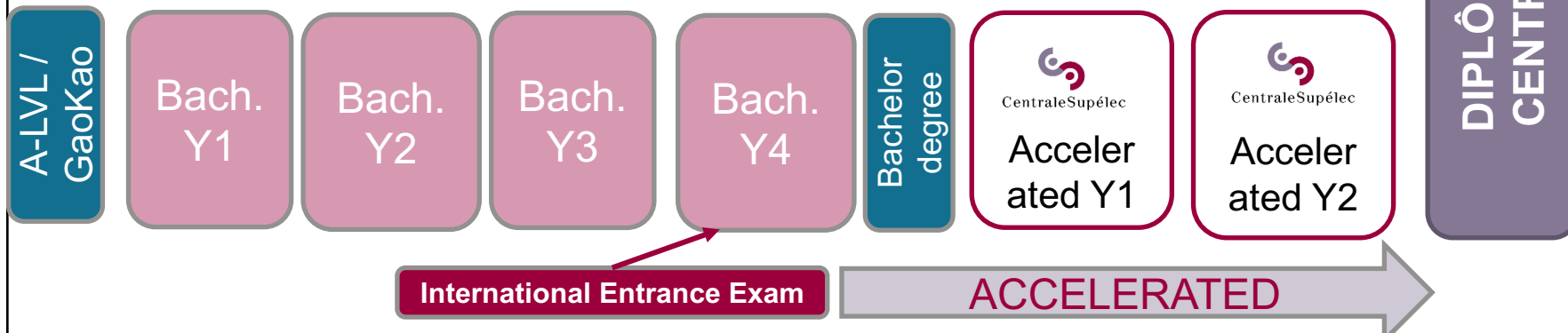
CENTRALESUPELEC INTERNATIONAL ACCELERATED ENGINEERING PROGRAMME

OUR ACCELERATED PROGRAMME TRAINS YOU TO BECOME AN OUSTANDING 'FRENCH ENGINEER' IN ONLY 2 YEARS!

'French' student path to our Diplôme d'ingénieur :



Accelerated path to our Diplôme d'ingénieur :

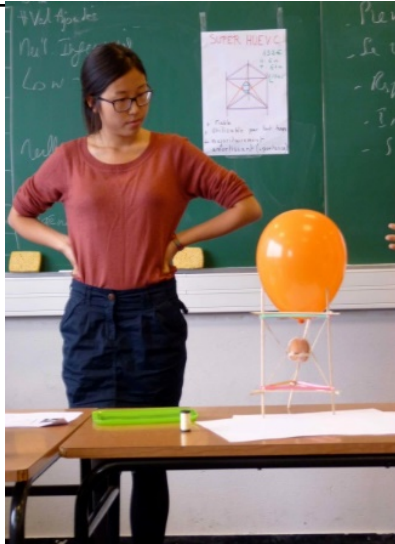


GET INTERNSHIPS AND JOB OFFERS FROM FRENCH AND INTERNATIONAL COMPANIES





WE WILL PREPARE YOU TO BECOME



A top-level and reputable science & engineering professional:
Multi-disciplinarity, Integration, Modelling and abstraction, Complex Systems



An engaged leader and team player with professional and social skills :
Adaptable, Pragmatic, Innovative, Leader, Entrepreneur, Team Player, Engaged, Responsible



Internationally at ease and progressing in a global environment
Lives and works in a globalized environment, prepared to tackle global and local challenges, multi-cultural, multilingual, trained to the multicultural, multisite workplace

HIGHLIGHTS OF THE ACCELERATED PROGRAMME- YEAR 1



CentraleSupélec



Combining the tradition of scientific excellence with innovation, technology and corporate spirit
Learn to tackle complex engineering problems and develop professional and personal skills!

1

Multi-disciplinary engineering and fundamental sciences core programme : Mathematics, Physics, Computer Science – and engineering technologies – Mechanical and Civil Engineering, Energy Science and Engineering, Chemical Engineering, Industrial Engineering, Electrical Engineering etc..

2

Elective courses in engineering and science to prepare your specialisation

3

Business Sciences, Humanities and Social Sciences, Team projects, languages, soft skills

HIGHLIGHTS OF THE ACCELERATED PROGRAMME- YEAR 2



Develop an area of specialization and a professional track in Paris Saclay, Rennes or Metz.



6-month company internship at the end of the year

(choose your major for the second year during the second half of the 1st year)

Rennes Campus

- Automatic
- Computer Science
- Electronics and Signal Processing



Metz Campus

- Computer Science/ Robotics
- Telecommunication
- Electronics and Signal Processing



Paris-Saclay Campus

- Sustainable buildings/Architecture
- Energy
- Industrial Engineering
- Applied Math/Data Sciences
- Applied Physics
- Aeronautics and Space
- IT & Advanced systems
- Biotech Engineering
- Automation & Control
- Telecommunication
- Entrepreneurship
- Innovative systems design and development
- Operational management
- International Project management
- Research
- Finance and Strategy



LANGUAGE OF THE PROGRAMME

The Accelerated Engineering Programme can be taught either **in full-English during the 2 years** or in **English (year 1) and French (year 2)**. Some specialisations might not be available in English.

! However there is a French proficiency requirement for obtaining the Engineering degree at the end of the programme (B2 level)



Rennes Campus

- **Automatic:** Control and System Engineering
- **Computer Science:** Secure Information Systems
- **Electronics and Signal Processing:** Electronic Systems, Networks and Images

Metz Campus

- **Computer Science:** Interactive Systems and Robotics – Computer Science Term
- **Communication:** Photonics and Communication Systems
- **Electronics and Signal Processing:** Interactive Systems and Robotics

Paris-Saclay Campus



- Sustainable buildings/Architecture
- Energy
- Industrial Engineering
- Applied Math/Data Sciences
- Applied Physics
- Aeronautics and Space
- IT & Advanced systems
- Biotech Engineering
- Automation & Control
- Telecommunication
- Electronics & Signal processing

- Entrepreneurship
- Innovative systems design and development
- Operational management
- International Project management
- Research
- Finance and Strategy

SPECIAL SERVICES



CentraleSupélec

Services dedicated to the Accelerated Engineering Degree Programme students:

- Tailored courses/training : more than 60% of English taught courses for the whole programme
- French language courses to help students reach the required level for the degree and if they wish to follow the final year in French
- Coaching in Maths and Physics (depending on students' background)
- Specific assistance to find an internship in France or abroad
- Mentoring by CentraleSupélec alumni, professors and peers on career, studies and campus life aspects

COMING TO CENTRALESUPELEC: WHY?



CentraleSupélec

- Obtain a master level **diploma in one of the best French and European institutions**, recognized by international top companies
- **Immerse yourself into the industrial world** through privileged company links during the program and after
- **Play a major role in the research and development of innovative technologies**
 - Experience **French culture and language**



APPLICATION PROCESS



CentraleSupélec



Who can apply?

- Students in their 4th year of Bachelor of Science (Maths or Physics) or Engineering from a non-French university
- Students already having a Bachelor of Science or Engineering from a non-French university



Who can apply?

- Students in their 4th year of Bachelor of Science (Maths or Physics) or Engineering
- Students already having a Bachelor of Science of Engineering

What degree will I get after the programme?

- Students will obtain a CentraleSupélec engineering degree (either the 'Diplôme of Centrale Paris' or the 'Diplôme of Supélec' depending on your major)
- This is the exact same degree that will obtain any French engineering student

What are the tuition fees for international accelerated programme?

- Tuition fees for the fast track programme are 18 000 € per year (year in English) or 15 000€ (year in French)

Housing during the program?

- A room or shared apartment is guaranteed on campus for this programme at an average cost of 400€ /month

Living expenses :

A monthly estimate budget for living in France outside tuition and lodging is around 400€/month



Tuition fees for the Accelerated Engineering Degree Programme :

- **18,000 €/year (Year taught in English)**
- **15,000 €/year (Year taught in French)**

Partner university excellence grant

For candidates registered for a Bachelor's degree or having obtained their Bachelor's degree at a Partner university*, annual tuition fees are reduced to **12,000 €/year**.

CentraleSupélec Jury Excellence grant

Jury excellence grant will also be available for:

- The top 12 candidates passing the entrance exam in November - tuition fee reduction to **12,000 €/year**
 - The top 5 candidates - an additional **living grant of 13,000 €/year**
-
- List of partner universities in China (non-exhaustive) : Beihang, Tsinghua, Shanghai Jiaotong, Xi'an Jiaotong, Zhejiang U, Beijing Institute of Technology, USTC (Hefei), Harbin Institute of Technology, BUPT, Huazhong, Nanjing U
 - This list is not exhaustive. Please contact us for further information at : accelerated_eng_prog@centralesupelec.fr

CENTRALE SUPELEC ACCELERATED PROGRAMME— PHASE 1 – ONLINE APPLICATION



CentraleSupélec

Application files are to be filled online (<http://centralesupelec-accelerated-progr.fr/registration/>)

June 1st – October 27th 2017

Please prepare the following documents in pdf format

- National ID document (Passport or ID card)
- Academic transcripts for the bachelor studies
- Statement of purpose (Why do you apply to this program?)
- Recommendation letters (optional, up to 2)
- Resume
- Official results sheet for the gaokao results
- Official results of management aptitude test score : GMAT, GRE or Tage Mage (optional but preferable)

The following documents will be requested before you enter the programme if your application is successful:

- English test (TOEFL or IETLS) to show a minimum level of B1 (B2 recommended)
- Official bachelor degree document

The Accelerated Programme admission jury - Phase 1 will review your file within 15 days and let you know if you can apply to Phase 2 to take the exam.

CENTRALESUPELEC ACCELERATED PROGRAMME– PHASE 2 – ONSITE ENTRANCE EXAM TESTS

If you are selected after the online application phase 1, you will be invited for 2 half-days of written and oral exams sessions in China to meet our professors during the week of November 20th to November 24th, 2017.

Depending on your academic background, you will take different series of tests :

	Bachelor In Maths/IT/ Computer Sc. and related	Bach. In Physics Sc. and related	Bach. In Mechanical Eng. and related	Bach. In Electrical Eng. and related
WRITTEN TESTS (3 hrs)	Maths – 2 hrs	Physics – 2 hrs	Mechanical eng– 2 hrs	Electrical eng. – 2 hrs
	MCQ in Maths & Physics – 1 hr	MCQ in Maths – 1 hr	MCQ in Maths – 1 hr	MCQ in Maths – 1 hr
	Physics – 45 mn	Physics – 45 mn	Mechanical eng – 45 mn	Electrical eng.– 45 mn
ORAL TESTS (3 hrs)	Maths – 45 mn	Engineering topic – 45 mn	Maths – 45 mn	Maths – 45 mn
	Interview – 30 mn	Interview – 30 mn	Interview – 30 mn	Interview – 30 mn

The scope of the series of tests and examples of test exercises are available on the website :

<http://www.centralesupelec-accelerated-progr.fr>

KEEP IN CONTACT WITH CENTRALESUPELEC

Any question?

- **Website link for general information on the programme:**

<http://www.centralesupelec.fr/en/accelerated-engineering-degree-masters-level>

- **Website link for application to the programme:**

<http://www.centralesupelec-accelerated-progr.fr>



- **Contact us by email:**

Accelerated_prog_eng@centralesupelec.fr

